

INKJET PRINTERS

The collage features several images illustrating the capabilities of Inkjet Printers:

- Top Left:** A hand holding a small jar of 'SOMMAR KONJAG' jam with a custom label.
- Top Center:** A hand placing a 'Dixi' juice bottle into a custom yellow bag.
- Top Right:** An 'LX610e' printer printing a colorful 'Easter Eggs' label.
- Middle:** Large white text 'INKJET PRINTERS' overlaid on a pink background with various product images.
- Bottom Left:** A hand packing small bottles into a cardboard box.
- Bottom Center:** A printer printing a 'Skin Cream' label.
- Bottom Right:** A printer printing a 'PERSONALISE YOUR BODY BUTTER' label and a custom 'WILD LUCY' panda sticker.





What is inkjet?



Inkjet printers are the most common type of printing devices, which are used as inexpensive home printers as well as in large industrial machines. They produce digital copies by spraying ink onto the paper.

The heart of an inkjet printer is the printhead, containing thousands of tiny microscopic nozzles firing ink onto the substrate. These droplets are typically 3-5 picolitres small, which creates a raster free, photo quality print image.

Combined with a super precise moving mechanism this results in millions of droplets fired every second. Once the droplet touches the substrate a binding effect will take place between the special designed ink and the inkjet coating, delivering stunning, crisp clear, high contrast, waterproof and fade-resistant colour prints.

Beside the standard dye-based ink, which is perfect for any type of media with inkjet coating, we offer for most systems a pigment ink in combination with matte surfaces to get a much higher UV-resistance for outdoor use.

DTM Print is frequently evaluating the market to offer the latest and best technology available in the inkjet market. To produce exceptional product labels for all kind of applications you not only need advanced print technology but also high-quality materials. Inkjet substrates can include matte, semi-gloss and high-gloss materials in paper and polyester as well as special materials like silver, gold or holographic.

Key end-user sectors for booming inkjet printing market

Manufacturers and private labellers use the inkjet label printers to print any kind of food and beverage labels, chemical labels, cosmetic labels, barcode and box labels, personalised labels and many more. To get some ideas please find below a list of our key applications and markets.

- Point of Sale (information signs, coupons, vouchers, price and promotion stickers, labels for cardboards and boxes)
- Logistics (barcode labels)
- Beverages (labels for beer, wine, spirits, coffee, water, etc.)
- Food (labels for food manufacturers, food services, catering, bakeries, beekeepers, etc.)
- Events/Meetings/Conventions (visitor badges, concert/theatre/cinema tickets)
- Hospitality (coupons/vouchers, tickets, name badges)
- Retail Shops (coupons, signs, labels for seasonal products)
- Personalisation (customised labels in all markets, labels for special occasions like weddings, anniversaries, etc.)
- Manufacturing (barcode, box and product labels)
- Seasonal Products & Market Testing (special editions, prototype labels)
- Industry (GHS conform labels)

LX500ec

COLOR LABEL PRINTER



Ink
Single tri-colour CMY



Print Width
19 - 108 mm (0.75 - 4.25")



Volume
Up to 1,000/day



Features
Guillotine cutter



Print Speed
Up to 63.5 mm/s (2.5"/s)



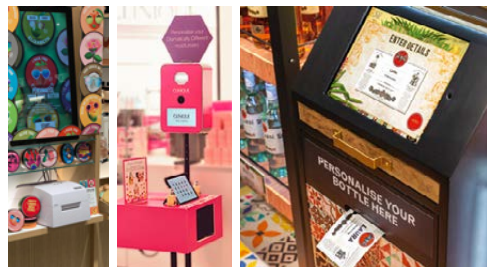
Compatible with
Windows + macOS

Facts about the LX500ec Color Label Printer

The LX500ec uses advanced high-resolution inkjet technology to produce short runs of product labels in impressive professional quality. Best of all, depending upon the quantity you print, the price per label will be significantly less than labels printed on flexo or offset.

Key facts

- ▶ 4800 dpi full-colour printing
- ▶ 16.7 million colours printable
- ▶ Interchangeable dye or pigment inks
- ▶ Built-in label cutter (guillotine-style)
- ▶ Small, compact size
- ▶ Prints up to 108 mm (4.25") wide



Perfect for POS and kiosk solutions

Everyone loves personalised labels. Due to the small size of the printer, the LX500ec is perfect for POS applications. Let your customers create personalised labels right in your shop! DTM Print provides an individual app solution that can be adapted to your requirements.

What's in the box?

- ▶ NiceLabel Free DTM Edition & BarTender UltraLite DTM Edition (Windows) & Belight Swift Publisher 5 (Mac)
- ▶ 4x3" DTM Paper High Gloss starter roll
- ▶ Dye-based CMY ink cartridge
- ▶ Instructions & sample book

More information

Scan the QR code to see all videos related to the LX500ec.

Visit dtm-print.eu for detailed information.



LX600e

COLOR LABEL PRINTER



Ink
Single tri-colour CMY



Print Width
13 - 127 mm (0.5 - 5")



Volume
Up to 3,000/day



Features
Pizza-wheel cutter



Print Speed
Up to 114 mm/s (4.5"/s)



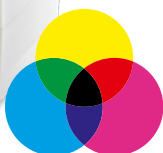
Compatible with
Windows + macOS

Facts about the LX600e Color Label Printer

The LX600e single cartridge solution for both pigment and dye ink allows users to print a wider variety of applications while easing print operations. Print labels when and where you need them in just the quantities you can actually use. It includes all the same quality features as the LX610e without the built-in contour cutter.

Key facts

- ▶ 4800 dpi full-colour printing
- ▶ 16.7 million colours printable
- ▶ Interchangeable dye or pigment inks
- ▶ Built-in label cutter (pizza-wheel style)
- ▶ Compact & lightweight desktop printer
- ▶ Prints up to 127 mm (5") wide



Low maintenance

Gone are the days of clogged nozzles and unwieldy and expensive printhead replacements. Users get a brand new printhead each time they change the cartridge, simplifying maintenance and dramatically lowering on-going operating costs. With a simple swap-out of ink cartridges, LX600e can print with dye-based ink or pigment ink. Both types of ink work interchangeably on the same printer.

What's in the box?

- ▶ NiceLabel Free DTM Edition & BarTender UltraLite DTM Edition (Windows) & Belight Swift Publisher 5 (Mac)
- ▶ Dye-based CMY ink cartridge
- ▶ Instructions & sample book

More information

Scan the QR code to see all videos related to the LX600e.

Visit dtm-print.eu for detailed information.



LX610e

COLOR LABEL PRINTER



Print & contour cut
all-in-one



Ink
Single tri-colour CMY



Print Width
13 - 127 mm (0.5 - 5")



Volume
Up to 3,000/day



Features
Digital contour cutter &
pizza-wheel cutter



Print Speed
Up to 114 mm/s (4.5"/s)



Compatible with
Windows + macOS

Facts about the LX610e Color Label Printer

LX610e's printing and precision die-cutting are incorporated into one easy, time-saving step. Print and contour cut custom labels into any shape – all in one simple, unattended process. Choose from standard die-cuts or create an individual contour cut that automatically and precisely follows the outline of the image. You'll never need to order a custom die again.

Key facts

- ▶ 4800 dpi full-colour printing
- ▶ 16.7 million colours printable
- ▶ Interchangeable dye or pigment inks
- ▶ Digital contour cutter & built-in label cutter (pizza-wheel style)
- ▶ Prints up to 127 mm (5") wide
- ▶ Lamination mode



Print & cut software PTCreatTM Pro

With the included PTCreat Pro software you are ready for importing images and different file types as .psd, .ai and .pdf. Powerful features such as layering, the export of images and contour cutting around intricate artwork are part of PTCreat Pro. An auto-trace and cut function is especially useful for printing and cutting complicated shapes and designs.

What's in the box?

- ▶ PTCreat Pro software (Windows & Mac) & NiceLabel Free DTM Edition & BarTender Ultralite DTM Edition (Windows) & Belight Swift Publisher 5 (Mac)
- ▶ DTM Paper Semi Gloss roll
- ▶ Dye-based CMY ink cartridge
- ▶ Instructions & sample book

More information

Scan the QR code to see all videos related to the LX610e.

Visit dtm-print.eu for detailed information.



LX910e

COLOR LABEL PRINTER



Ink
Single tri-colour CMY



Print Width
13 - 210 mm (0.5 - 8.25")



Volume
Up to 5,000/day



Features
Pizza-wheel cutter



Print Speed
Up to 114 mm/s (4.5"/s)



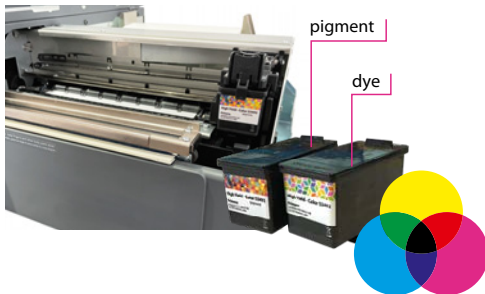
Compatible with
Windows + macOS

Facts about the LX910e Color Label Printer

With the LX910e you can quickly and easily print labels in outstanding print quality over a width of up to 210 mm. It has a powder-coated metal housing that is certified for areas with increased safety regulations. Especially suitable for use in mechanical and plant engineering, or when electromagnetic screening (EMC) is required.

Key facts

- ▶ 4800 dpi full-colour printing
- ▶ 16.7 million colours printable
- ▶ Interchangeable dye or pigment inks
- ▶ Built-in label cutter (pizza-wheel style)
- ▶ Sturdy Metal Enclosure
- ▶ Prints up to 210 mm wide



One printer, two solutions

Joining at the nexus of versatility and simplicity, its single cartridge solution for both pigment and dye ink allows users to print for a wider variety of applications while easing print operations. Switch easily between dye and pigment ink without changing the printhead.

What's in the box?

- ▶ NiceLabel Free DTM Edition & BarTender UltraLite DTM Edition (Windows) & Belight Swift Publisher 5 (Mac)
- ▶ 4x3" DTM Paper High Gloss starter roll
- ▶ Dye-based CMY ink cartridge
- ▶ Instructions & sample book

More information

Scan the QR code to see all videos related to the LX910e.

Visit dtm-print.eu for detailed information.



LX4000e

COLOR LABEL PRINTER



Ink

Separate CMY ink tanks



Print Width

13 - 210 mm (0.5 - 8.25")



Volume

Up to 10,000+ per day



Features

Pizza-wheel cutter & wired ethernet



Print Speed

Up to 114 mm/s (4.5"/s)



Compatible with

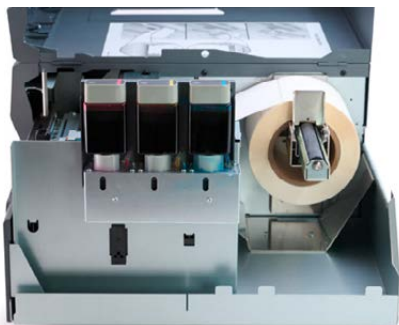
Windows + macOS

Facts about the LX4000e Color Label Printer

LX4000e features an all-new ink system and printhead and provides the lowest cost per print. The printer offers the same quality features as LX910e with the addition of an user-replaceable printhead and large individual CMY ink tanks with either dye or pigment ink. It's perfect for a range of industries including health and beauty, food and beverage, chemicals and more.

Key facts

- ▶ 4800 dpi full-colour printing
- ▶ 16.7 million colours
- ▶ Separate, large ink tanks – 60 ml each & pre-primed printhead with 42 ml ink
- ▶ Built-in label cutter (pizza-wheel style)
- ▶ Wired ethernet for network connection
- ▶ Prints up to 210 mm wide



Large ink tanks – lowest printing costs

With separate ink tanks for cyan, magenta and yellow, the LX4000e achieves the lowest print cost per label in its class. Thanks to the user-replaceable printhead, a later conversion between dye or pigment ink is possible at any time. The printer impresses with its outstanding print quality, ease of maintenance and print width of up to 210 mm.

What's in the box?

- ▶ NiceLabel Free DTM Edition & BarTender UltraLite DTM Edition (Windows) & Belight Swift Publisher 5 (Mac)
- ▶ 6x4" DTM Paper Semi Gloss or DTM Paper Matte starter roll
- ▶ User-replaceable printhead
- ▶ A set of CMY ink tanks
- ▶ Instructions & sample book

More information

Scan the QR code to see all videos related to the LX4000e.

Visit dtm-print.eu for detailed information.



Technical Specifications – Comparison Table

| | LX500ec COLOR LABEL PRINTER | LX600e COLOR LABEL PRINTER |
|----------------------------|--|---|
| Print Method | Thermal inkjet with dye or pigment ink | |
| Print Resolution | 600 x 1200 dpi native; up to 1200 x 4800 dpi | |
| Droplet size | 4 picolitre | |
| Print Speeds | Up to 63.5 mm (2.5") per second | Up to 114 mm (4.5") per second |
| Inks | Single high capacity CMY ink cartridge, process black | |
| Printhead | Included in cartridge | |
| Colours | 16.7 million | |
| Colour Matching | ICC colour profiles included; ability to add custom ICC colour profiles for other media types | |
| Print Width | 19 mm - 108 mm (0.75" - 4.25") | 13 mm - 127 mm (0.5" - 5") |
| Media Width | 25 mm - 108 mm (1" - 4.25") | 38 mm - 130 mm (1.5" - 5.125") |
| Print Length | 19 mm - 609 mm (0.75" - 24") | 13 mm - 305 mm (0.5" - 12") |
| Media Types | Roll-fed pressure-sensitive labels, roll-fed tags, fan-fold labels or tags | |
| Media Sensing | Moveable see-through sensor for die-cut labels; reflective sensor for labels and tags with black mark (bottom); can use continuous and pre-printed labels and tags | |
| Media Feed | Internal or external | |
| Supply Roll | 127 mm (5") maximum outer diameter on 51 mm (2") core; core has additional restrictions - see manual | 152 mm (6") maximum outer diameter on 76 mm (3") core |
| Cutter | Built-in "guillotine" style label cutter | Built-in "pizza-wheel" style label cutter |
| Ink Level Warning | Calculates actual number of prints remaining based upon ink usage of graphics being printed. | |
| Operating Systems | Windows 7 and higher Mac OS X 10.11 and higher | |
| Data Interface/Connections | USB 2.0 | |
| Label Design Software | NiceLabel Free DTM Edition and BarTender UltraLite DTM Edition (Windows) Belight Swift Publisher 5 (Mac)* | |
| Power Requirements | 100 V - 240 V AC (50/60 Hz), 12 V DC, 5.0 A | |
| Certifications | UL, UL-C, CE, KC, RoHS, UKCA | UL, UL-C, CE, FCC Class A, RoHS, UKCA |
| Weight | 3.2 kg | 5.2 kg |
| Dimensions (WxHxD) | 264 mm x 180 mm x 389 mm | 345 mm x 242 mm x 432 mm |
| Operating Temperature | 10 °C - 35 °C | |
| Operating Humidity | 10 % - 60 % RH (non-condensing) | |
| Available Versions | LX500ec (074276) | LX600e (074562) |
| What's in the Box | LX500ec Color Label Printer, one dye-based CMY ink cartridge (053374), one 4x3" DTM Paper High Gloss starter roll, USB 2.0 cable, EU power cord and instructions** | LX600e Color Label Printer, one dye-based CMY ink cartridge (053496), USB 2.0 cable, EU power cord and instructions** |
| Warranty | 36 months (after product registration, for devices purchased in EU/EFTA countries and UK) | |
| Manufacturer | Primera Technology, Inc. | |

*Can also be used with most other popular label design & graphics programs.

** Label design software and printer driver can be downloaded from the DTM Print website.

LX610e

COLOR LABEL PRINTER

LX910e

COLOR LABEL PRINTER

LX4000e

COLOR LABEL PRINTER

| | | |
|---|---|---|
| Thermal inkjet with dye or pigment ink | | |
| 600 x 1200 dpi native; up to 1200 x 4800 dpi | | |
| 4 picolitre | | |
| Up to 114 mm (4.5") per second | | |
| Single high capacity CMY ink cartridge, process black | | Separate Cyan, Magenta and Yellow Ink Tanks, process black |
| Included in cartridge | | User replaceable, multi-use printhead |
| 16.7 million | | |
| ICC colour profiles included; ability to add custom ICC colour profiles for other media types | | |
| Pre die-cut: 13 mm - 127 mm (0.5" - 5") Digital die-cut: 13 mm - 104 mm (0.5" - 4.1") | 13 mm - 210 mm (0.5" - 8.25") | 13 mm - 210 mm (0.5" - 8.25") |
| Pre die-cut: 54 mm - 130 mm (2.125" - 5.125") Digital die-cut: 121 mm (4.75") | 38 mm - 212 mm (1.5" - 8.375") | 38 mm - 212 mm (1.5" - 8.375") |
| 13 mm - 305 mm (0.5" - 12") | 13 mm - 1524 mm (0.5" - 60") | |
| Roll-fed pressure-sensitive labels, roll-fed tags, fan-fold labels or tags, DTM Print or Primera approved materials must be used for continuous digital die-cutting media | Roll-fed pressure-sensitive labels, roll-fed tags, fan-fold labels or tags | |
| Moveable see-through sensor for die-cut labels; reflective sensor for labels and tags with black mark (bottom); can use continuous and pre-printed labels and tags | | |
| Internal or external | | |
| 152 mm (6") maximum outer diameter on 76 mm (3") core | | |
| Built-in die-cutting knife blade Built-in "pizza-wheel" style label cutter | Built-in "pizza-wheel" style label cutter | |
| Calculates actual number of prints remaining based upon ink usage of graphics being printed. | | |
| Windows 7 and higher Mac OS X 10.11 and higher | | Windows 8 and higher Mac OS X 10.13 and higher |
| USB 2.0 | | USB 2.0, wired Ethernet (Windows only) |
| Digital die-cut: PTCreate Software (Windows & Mac) or BarTender UltraLite DTM Edition (Windows) Pre die-cut: NiceLabel Free DTM Edition and BarTender UltraLite DTM Edition (Windows) or Belight Swift Publisher (Mac)* | NiceLabel Free DTM Edition and BarTender UltraLite DTM Edition (Windows) Belight Swift Publisher 5 (Mac)* | |
| 100 V - 240 V AC (50/60 Hz), 12 V DC, 5.0 A | | |
| UL, UL-C, CE, FCC Class A, RoHS, UKCA | | |
| 5.7 kg | 16.6 kg | 16.6 kg |
| 345 mm x 242 mm x 432 mm | 438 mm x 231 mm x 438 mm | |
| 10 °C - 35 °C | | |
| 10 % - 60 % RH (non-condensing) | | |
| LX610e Pro (074542DTM) | LX910e (074417) | LX4000e with dye-based ink (074435) LX4000e with pigment ink (074436) |
| LX610e Color Label Printer, PTCreate Pro software, one dye-based CMY ink cartridge (053496), one DTM Paper Semi Gloss roll (CC36SG122HIS), USB 2.0 cable, EU power cord and instructions** | LX910e Color Label Printer, one dye-based CMY ink cartridge (053492), one 4x3" DTM Paper High Gloss starter roll, USB 2.0 cable, EU power cord and instructions** | LX4000e Color Label Printer, a set of CMY ink tanks, a pre-primed printhead, one 6x4" DTM Paper Semi Gloss (dye) or DTM Paper Matte (pigment) starter roll, USB 2.0 cable, EU power cord and instructions** |
| 36 months (after product registration, for devices purchased in EU/EFTA countries and UK) | | |
| Primera Technology, Inc. | | |



Hear From Our Customers – Case Studies

DTM Print has empowered numerous businesses to enhance their labelling processes through innovative printing solutions. Our case studies showcase how companies across various industries have successfully integrated our label printers to meet their unique needs.

These examples illustrate the versatility and effectiveness of DTM Print's solutions in addressing diverse labelling challenges.



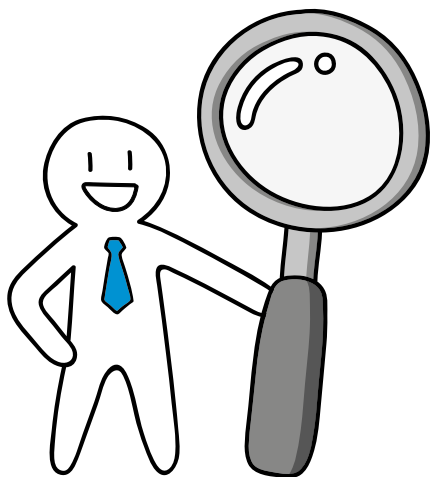
Take part in a case study with us!

A case study is an in-depth, detailed examination of a particular case within a real-world context. In this instance, we would focus on you, your business and how you use our devices.

To get started, contact:



Katrin Hoffmann (khoffmann@dtm-print.eu)



Rather than relying on a print company, we can now produce all our personalised labelling in house which means that we can turn around orders very quickly.

Tiffinie Pride, director of The Wiltshire Liqueur Company

More information

Scan the QR code to see all video case studies related to our inkjet label printers.

Visit dtm-print.eu for detailed information.

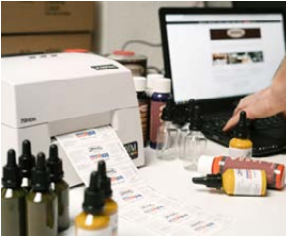




More than just a print shop

LX610e

How the Print and Mail Service of the University of Leeds offers great value for students and university members by offering new products with a desktop label and a direct-to-food printer.



Art and creativity meet flexible label production

LX500ec

Herterich - Airbrush & Künstlerbedarf supplies its customers, amateur and professional artists from home and abroad, with a wide range of products for the most diverse art styles. With the LX500ec they have the ideal assistant for their individual and CI-compliant label production.



Individual candle dreams come to life with the LX610e

LX610e

High demands in terms of quality and flexibility are made on the label production for the "Evoke" scented candles, which are more than met by the LX610e Color Label Printer.



From flower to jar: Beekeeping in harmony with bees and nature

LX500e

Maries Bihantverk AB is a small-scale beekeeping, located in Malmö. Marie Backmann, the owner, is a passionate professional beekeeper that loves nature, bees and the fact of crafting something plus passing it along to others. With the LX500e she found a label printer that makes her honey labels stand out at retail.

Simplified Labelling Process

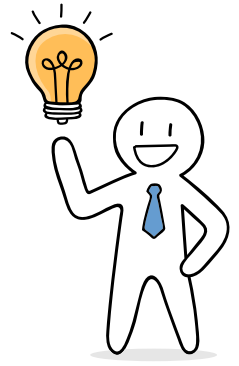
Traditional Process:

1. Design your label
2. Place an order
3. Proof and change label
4. Wait for delivery
5. Stock all of your different product labels
6. Apply labels
7. Throw away unused labels



Process with DTM Print:

1. Design your label
2. Print on-demand
3. Apply labels



Your design on Mac or Windows

Print & design your label:

- ▶ You are free to choose any design program you prefer
- ▶ Print your labels directly from your design program
- ▶ Use label design applications like NiceLabel or BarTender to take advantage of extra features, such as modified templates, variable data and any barcode type

Print your full-colour labels on-demand

Your advantages:

- ▶ High resolution full-colour labels
- ▶ Only print the number of labels you need; with no minimum quantities
- ▶ Skip delivery times and extra stock costs for different label layouts
- ▶ No wastage of labels after product label changes
- ▶ Print graphics, photos, text and barcodes





Your printed labels



Apply your labels semi-automatically

Fast and easy:

- ▶ Set the guides
- ▶ Place your container in the machine
- ▶ Press footswitch or pull the arm and your label is applied



Your labelled products



LOOKING FOR LABELS?

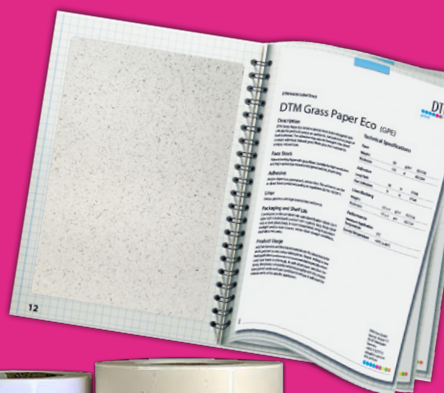
Recommended Genuine DTM Label Stock for inkjet printers is available in many standard sizes as well as custom-made shapes & sizes.

YOU WANT SAMPLES?

✉ sales@dtm-print.eu

MORE INFORMATION:

🌐 supplies.dtm-print.eu



Stay up to date and follow us on social media



DTM Print GmbH
Mainzer Str. 131
65187 Wiesbaden
Germany
+49 611 927770
sales@dtm-print.eu
dtm-print.eu

